

Stairs Installation Guide

EN**WWW.CORETECFLOORS.COM**

GENERAL INFORMATION

These installation instructions apply solely to COREtec® Stairs. All instructions and recommendations need to be followed correctly to ensure an expert installation and an excellent result. Please use this guide in combination with the installation video, which is available on our website, watching this video, however, does not replace reading these installation instructions.



VIEW INSTALLATION VIDEO HERE

[HTTPS://GO.CORETECFLOORS.BE/STAIRS-VIDEO](https://go.coretecfloors.be/stairs-video)

COREtec® stairs are only suitable for indoor installation.



Acclimatisation of the product prior to installation is not required, however, we recommend installing COREtec® stairs at an ambient temperature of 18° to 29°C, a subfloor temperature between 15° and 29°C and a product temperature of minimum 15°C.



Visually inspect all planks prior to installation and check for any irregularities or visible damage. Do not install any boards that show imperfections. Check to see if the supplied colour and quantities correspond to the colour and quantities that you have ordered. Any backorders from a different production batch can have a slightly different colour nuance and complaints on this subject will not be accepted after installation.



Do not install COREtec® Stairs in areas exposed to temperatures below 0°C or above 65°C.



COREtec® Stairs are water and moisture resistant. Neither the boards nor the click system are negatively impacted by moisture during use or during cleaning. Excess moisture in the subfloor could, however, cause fungus or other moisture-related problems which create an unhealthy indoor environment.



Avoid exposure to direct and intense sunlight for extended periods of time as this could result in discolouration. We recommend using curtains or sun protection in rooms with strong direct sunlight. High temperatures caused by direct and intense sunlight can result in thermal expansion and colour fading.



COREtec® Stairs are warranted for 10 years provided that the installation has been done by a certified installer. This warranty applies only to the product itself, not to the installation.

PREPARATION

Before you order COREtec® Stairs, it is important to fill out both the checklist and measurement form for exact order information.



DOWNLOAD AND PRINT THE SPECIAL
CHECKLIST + MEASUREMENT FORM HERE
[HTTPS://STAIRS.USFLOORS.BE](https://stairs.usfloors.be)

The **checklist** sums up all the required preparation work that needs to be done **before** the actual installation day. The most important requirements are:

- The stairs need to be completely stripped.
- Repair where needed so the stairs are fully functional.
- The painting work needs to be done in advance.
- Clean the stairs so it is free of dust and dirt.
- Unevenness above 3 mm must be removed.
- For open steps, order cover caps separately.

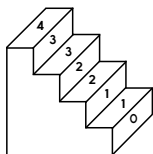
NOTE: depending on the condition of the existing tread and how the glue is applied, the acoustics might not be uniform when walking on the renovated staircase.

The **measurement form** helps the professional installer to decide which materials you need to order to renovate your staircase. Fill out this form carefully.

NOTE: If you choose to incorporate LED lighting into your stairs, make sure you provide a connection to a power outlet. The connection is a standard 220V transformer connected to a 1.5m long cord. The best way to connect the LED lighting is to drill a hole in the bottom riser and connect at the back of the stairs.

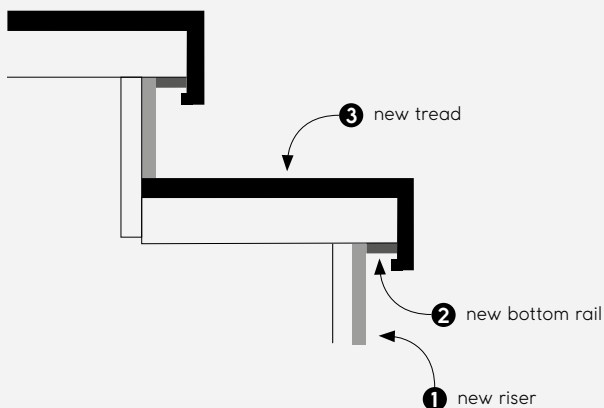
NUMBER EACH STAIR TREAD

Number each riser and tread starting from the bottom upwards. The first riser is N°0. You continue with numbering the next tread and riser N°1. This will help you with measuring and installing later on.



NOTE: Start the renovation from the bottom moving upwards.

MEASUREMENT



1 Risers:

- You start with riser N°0 and continue upwards.
- Measure the width of each riser. It's advisable to deduct 1 mm from the total width to give the riser a bit of margin. Do not forget to write the correct numbers with each measurement.

- Measure the height of each riser. Here you have to deduct the thickness of the new tread, as the riser is standing on the new tread. This is the case for each riser except riser 0.

2 Bottom rails:

a) Without LED lighting:

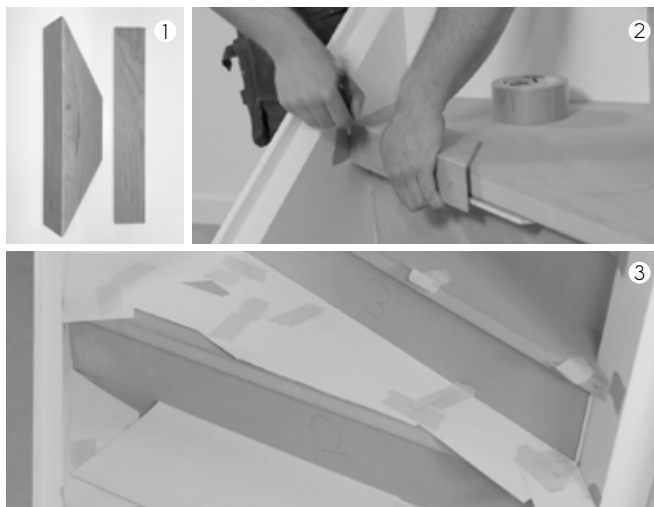
- Use a new tread and measure the smallest depth possible. It's important to avoid too much space between the old and the new step.
- The depth of the bottom rail is equal for every step.
- Measure the width of each bottom rail separately and write the correct number for each measurement.

b) With LED lighting:

- Here you have to take into consideration that the lights are integrated into the bottom rail.
- Before you start cutting, make sure the lights are positioned in the middle of each tread.

3 Treads:

1. Use a (leftover) piece of the new tread and bottom rail (make sure this piece is the same depth as your final board).
2. Put a piece of tape on both sides and mark the place where the new nose is going to be. Use this as your reference point to make your template (step 3).
3. Use pieces of cardboard to make a template for each tread. Mark every corner and reference point. Start from the bottom tread upwards and do not forget to number each piece of cardboard with the according N° of the tread. Or use a stair spider to cut each tread individually.



CUTTING THE ELEMENTS

There are multiple options to cut the pieces. This can be done with, for example, a circular saw, a jigsaw or a table saw. It is important to note that there should be a clean cut to avoid damage and fraying during cutting. We advise you not to use worn blades to ensure a good finish.

Use the cardboard template to cut off the exact measurements of each piece. Do not forget to number each piece with their according number. Check whether the new elements fit perfectly before you start applying glue. Correct where needed.

NOTE: Use a wooden block when cutting to make sure the tread is perfectly level. Make sure you cut the bottom rail at the same angle as the stairs.

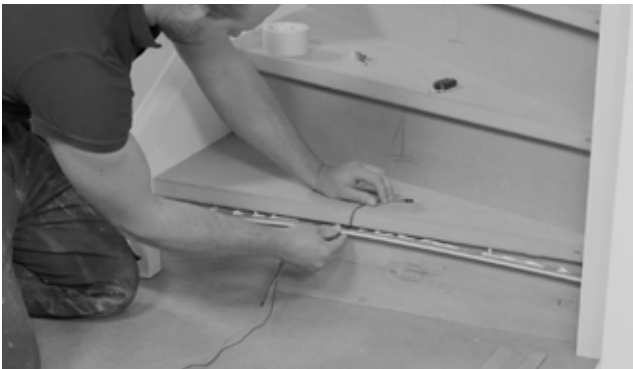
INSTALLATION

Recognized types of glue:

- For the treads we advise you to use a quality, fast-drying glue that fills in the little uneven spots on the old stair.
- For the risers and bottom rails, it's important to use high tack glue.
- Be careful not to create a hollow space by applying too much glue or using a glue that is too thick. This can have a negative effect on acoustics.

NOTE: Before you start glueing each part, check whether each part fits correctly. Make sure the wire for the lights is connected and works properly. Clean the surface of each tread so it's free of dirt and dust.

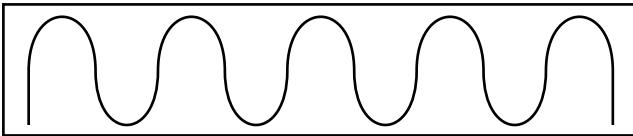
1. Always start from the bottom going upwards. You start by glueing the first riser (N°0).
2. Insert the power cable through the hole in the bottom riser.
3. Apply glue to bottom rail N°1 without putting glue on the lights.
4. Attach the bottom rail to the stairs.



5. Connect the short cable to the LED light by aligning the colours (red to red, black to black) and attach it to the tread with some paper tape.



6. Attach the long wire to the tread and riser with some paper tape for connecting to the next LED bottom rail.
7. Apply the glue on the existing tread and place the COREtec® tread on top of it. Apply some pressure.



8. Place a piece of cardboard on both sides to facilitate an equal finish with sealant later on.



9. Repeat these steps to complete the staircase.

FINISHING TOUCHES

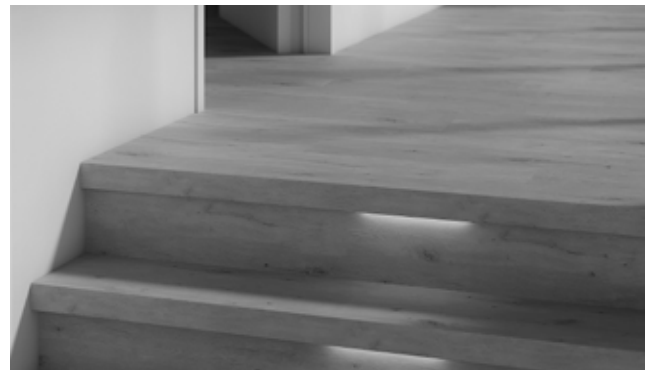


❶ Open steps:

- In case you have open steps, glue cover caps to the side.

❷ Exit step:

- **OPTION 1:** Connecting with COREtec® floor
Pick a tread from our Box C, glue it and connect the click system with the existing COREtec® floor for a smooth transition.



- **OPTION 2:** Connecting with other flooring
Use a normal tread and connect this to the existing floor with a COREtec® transition molding. All COREtec® accessories are available at your regular dealer.

❸ Applying sealant:

- Remove the cardboard pieces on the sides of the treads and fill them up with sealant. Use a spacer tool to smoothen up the finish at the sides.
- When the glue and sealant are dried up, clean the stairs with our COREtec® Clean, Quick & Green cleaning set.



VIEW INSTALLATION VIDEO HERE

[HTTPS://GO.CORETECFLOORS.BE/STAIRS-VIDEO](https://go.coretecfloors.be/stairs-video)